

SynNano

WIRELESS PERIPHERAL NODE



SYNELIXIS
2025

SynNano

With many years of experience in automation, information technology and precision agriculture, **Synelixis** presents the wireless peripheral node **SynNano**.

SynNano is **Synelixis** innovative solution, extending the capabilities of the **SynField** precision agriculture system.

SynNano is a peripheral monitoring and control device which **connects wirelessly** to a SynField X5 head-node, providing efficient and cost-effective coverage of large areas.



How it works

The **SynNano** peripheral node connects **wirelessly** to a SynField X5 head node that acts as a gateway for the SynNano device. The wireless interconnection can reach up to 3 km!

The device can support up to **2 sensors** and up to **2 actuators** offering almost real-time control of valves, relays and automations using advanced, user-defined rules.

SynNano incorporates innovative technologies to be **extremely energy efficient**. The device operates exclusively on battery power, without the need for a direct connection to an external power source. The integrated high-capacity LiSOCl_2 battery allows the device to operate for more than **5 years** without a battery change.



Remote Control & Monitoring

2

2 Sensors & 2 Actuators



Wireless Interconnection up to 3km!

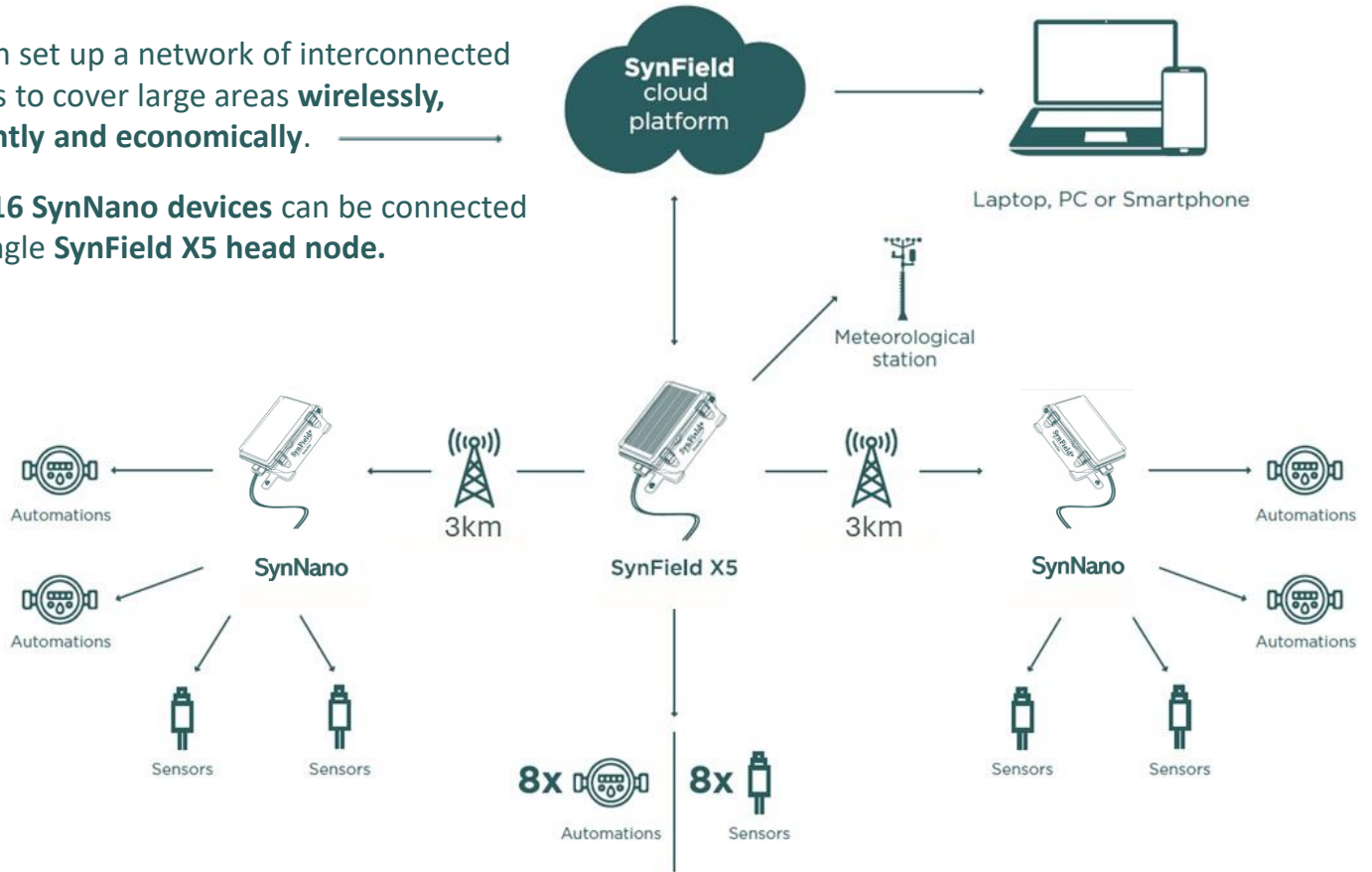


SynNano's battery can last at least 5 years



You can set up a network of interconnected devices to cover large areas **wirelessly, efficiently and economically.**

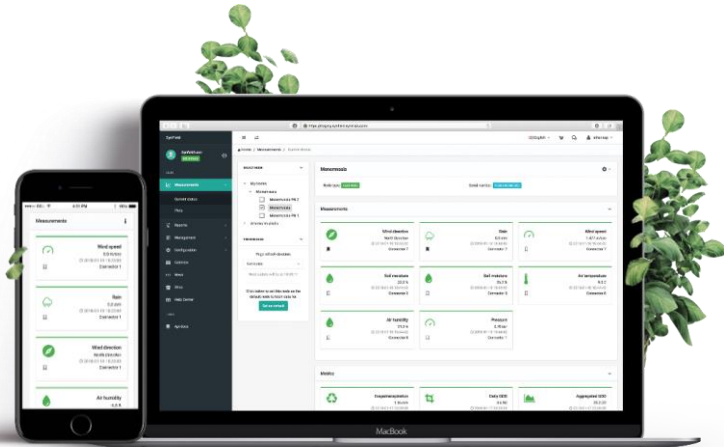
Up to **16 SynNano devices** can be connected to a single **SynField X5 head node.**



The SynField Cloud platform

The SynNano device periodically collects sensor data and forwards them to the SynField cloud platform via the LoRa interconnection. The SynField platform allows the user to remotely monitor various environmental and soil parameters in the field and to operate actuators. It also provides statistics, graphs and analyses, along with features like calendar and event list.

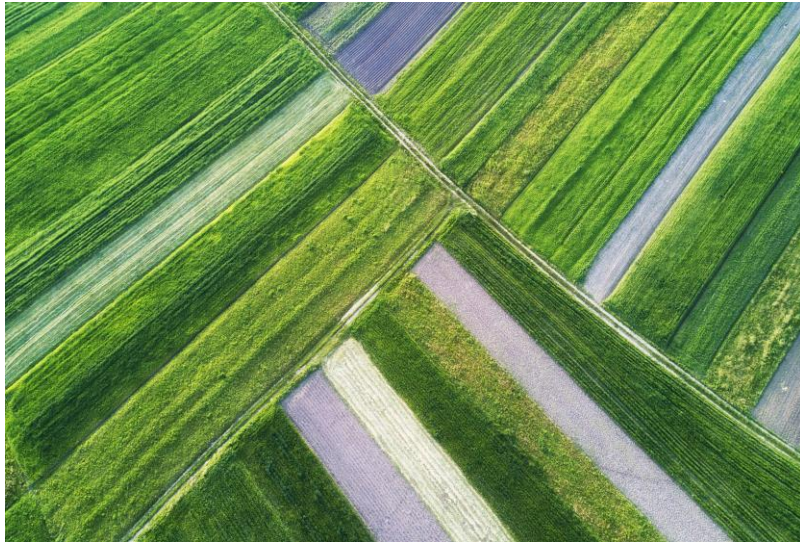
Through the platform you can set **alerts** so that you are automatically **notified** in case any of the criteria you set are met.



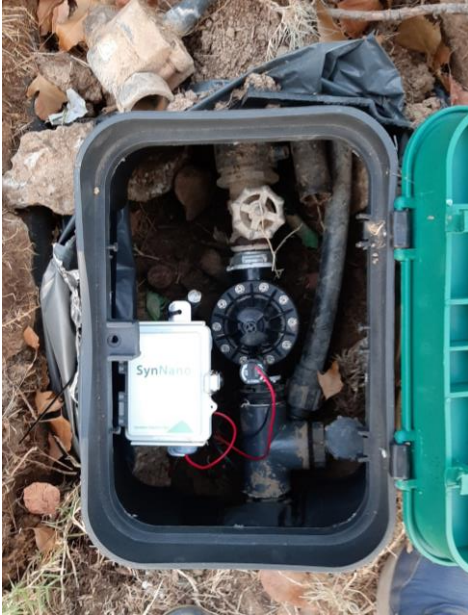
**Monitor and Control your crop
24/7 from your computer or
mobile device, wherever you
are.**

The wireless peripheral node **SynNano** extends the capabilities of SynField as it enables the creation of a wireless network of devices covering large areas of land **efficiently** and **economically**.

SynNano can be installed in both crops and smart parks providing remote irrigation control and monitoring of all critical parameters.



SynNano has a **compact design** and **innovative features**. The device **works exclusively on battery**, without requiring a connection to an external power source, allowing it to be installed even **under the ground**.



SYNELIXIS*

**157 Perissou Str., Nea Chalkidona Gr-14343,
Athens, Greece**

T:+30 210 2511 584

W: www.synelixis.com

W: www.synfield.gr

Email: info@synelixis.com, info@synfield.gr

